

# 2024 Winter Specials

Quarterly Special valid from January 1<sup>st</sup> – March 31<sup>st</sup>, 2024



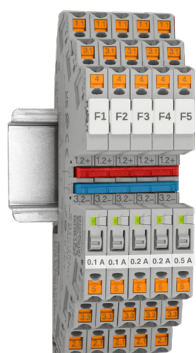
## POWER RELIABILITY — *Endless possibilities*

A reliable power system is one that can consistently meet the demand for electricity, while maintaining acceptable levels of safety and quality of service. Reliability is an important aspect of power systems, as interruptions in power supply can result in significant economic and social costs. Supplying the power is key when it comes to running any sort of loads, but protecting the circuits and monitoring that power offers a solid foundation a reliable system should be built around.



## Electronic Fuses PTCB eFuse

The NEW eFuse circuit breakers from Phoenix Contact for nominal currents below 1A. Features such as low voltage loss at the circuit breaker enables long cable paths to the load as well status indication and local and remote reset options. This means that decentralized applications in particular are reliably supplied and protected.



Order no.	Description	Characteristics	Promo Price
1441495	PTCB E1 24DC/0.1-0.63A NO	Set from 0.1A to 0.63A w/NO contact	\$35.63
1441496	PTCB E1 24DC/0.1-0.63A SI-R	Set from 0.1A to 0.63A w/ contact & reset	\$35.63
1464483	PTCB E1 24DC/0.1A SI-R	Fixed 0.1A w/contact & reset	\$35.63
1464484	PTCB E1 24DC/0.1A NO	Fixed 0.1A w/NO contact	\$35.63
1361049	PTCB E1 24DC/0.2A SI-R	Fixed 0.2A w/contact & reset	\$35.63
1361055	PTCB E1 24DC/0.2A NO	Fixed 0.2A w/NO contact	\$35.63
1361043	PTCB E1 24DC/0.5A SI-R	Fixed 0.5A w/contact & reset	\$35.63
1361051	PTCB E1 24DC/0.5A NO	Fixed 0.5A w/NO contact	\$35.63
1464485	PTCB E1 24DC/0.63A SI-R	Fixed 0.63A w/contact & reset	\$35.63
1464486	PTCB E1 24DC/0.63A NO	Fixed 0.63A w/NO contact	\$35.63






All orders must reference promo code **\*\*\*WINTER2024\*\*\***. Quarterly Special valid from January 1<sup>st</sup> – March 31<sup>st</sup>, 2024. All prices are customer net each.

\*Pricing valid in Canada only.



## Basic Power Supplies

### Essential Power Gen2

	Order no.	Description	Amps	Promo Price
	1394764	PS-EE-2G/1AC/24DC/60W/SC	2.5A	\$26.00
	1234301	PS-EE-2G/1AC/24DC/75W/SC	3A	\$30.00
	1234302	PS-EE-2G/1AC/24DC/120W/SC	5A	\$47.00
	1234304	PS-EE-2G/1AC/24DC/240W/SC	10A	\$76.00
	1234308	PS-EE-2G/1AC/24DC/480W/SC	20A	\$135.00

The ESSENTIAL POWER family are the ideal choice for systems with basic power requirements.

ESSENTIAL POWER has basic industry standards for worldwide use at a cost sensitive price.




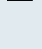
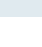
Supply your 24V DC system with devices from 60W to 480W power class.



## Energy Measuring Devices

### EMpro Energy Meters

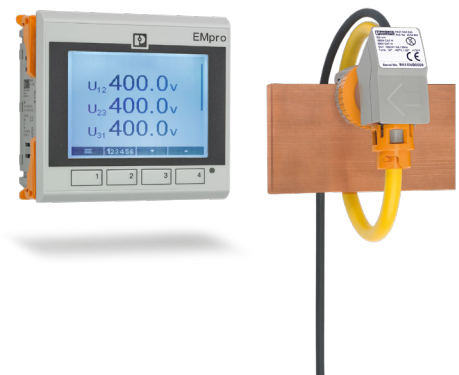
#### Features and Benefits

-  Energy measurement in just three steps, thanks to an intuitive installation wizard
-  Reduce wiring and configuration effort with energy measuring devices that connect directly to Rogowski coils from any manufacturer
-  Easy to maintain, thanks to smart web server and display functions
-  Global data access and the utilization of Smart Services with direct cloud connection
-  EMpro energy measuring devices are part of the COMPLETE line system

EMpro energy measuring devices acquire your energy data and communicate it to higher-level control and management systems. Configure and integrate the devices in just a few steps using the web-based, user-guided installation wizard. You can also benefit from the simple, direct connection of conventional Rogowski coils, and from the many practice-oriented web server and device functions.

Order no.	Description	Product Description	Promo Price
2908286	EEM-MA771	Energy Meter – Panel Mount	\$399.00
2908307	EEM-MA371	Energy Meter – DIN Rail Mount	\$389.00
2904890	PACT RCP-D95	Rogowski Coil (CT)	\$109.00
2904891	PACT RCP-D140	Rogowski Coil (CT)	\$109.00
2904892	PACT RCP-D190	Rogowski Coil (CT)	\$109.00

**Note:** Additional variants available upon request - Energy Meters with communication protocols, Rogowski Coil with longer data cable.





## Trusted Wireless 900Mhz Radioline

- Highly reliable, thanks to Trusted Wireless 2.0 technology
- Range of up to 32 kilometers, thanks to adjustable data rate
- Flexible network configuration: Radioline supports both point-to-point connections and complex mesh networks with up to 250 nodes
- Save on devices: transmit I/O signals or serial data using a single device, thanks to the integrated RS-232/RS-485 interface
- Can be extended with up to 32 I/O modules, thanks to DIN rail connector and hot-swap capability

Radioline is the wireless system for extended systems. Special features include extremely easy assignment of inputs and outputs by simply turning the thumbwheel without any programming.

Thanks to Trusted Wireless 2.0 technology, Radioline is the ideal choice for reliable use in industrial environments.



Order no.	Description	Application	Promo Price
2901540	RAD-900-IFS	Transceiver Wireless module	\$850.00
2901533	RAD-DAIO6-IFS	Mixed I/O extension module	\$425.00
2901535	RADI4-IFS	Digital input extension module	\$360.00
2901536	RAD-DOR4-IFS	Relay output extension module	\$360.00
2901539	RAD-DI8-IFS	Digital input extension module	\$385.00
2902811	RAD-DO8-IFS	Digital output extension module	\$385.00
2901537	RAD-AI4-IFS	Analog input extension module	\$425.00
2901538	RAD-AO4-IFS	Analog output extension module	\$425.00
2904035	RAD-PT100-4-IFS	Temp. digital input extension module	\$475.00

⚠ Antennas not included. Please contact your Phoenix Contact sales representative to find a suitable antenna for your application.

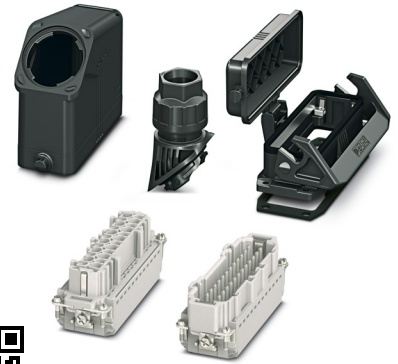
## Tool deals you wouldn't want to miss! TOOLfox

	<p><b>\$32.00</b></p> <p><b>CUTFOX 12</b> <b>1212128</b></p> <p>Cable cutters, up to 12 mm diameter cables</p>		<p><b>\$52.00</b></p> <p><b>CUTFOX 18</b> <b>1212129</b></p> <p>Cable cutters, up to 18 mm diameter cables</p> <ul style="list-style-type: none"> <li>• Spring loaded with lock</li> <li>• Angled head</li> <li>• Ergonomic design</li> </ul>	<p>THE <b>TOOL fox</b> </p>	
	<p><b>\$144.00</b></p> <p><b>CRIMPFOX CENTRUS 10S</b> <b>1213154</b></p> <p>Crimping tool for ferrules from 24-8 AWG.</p> <p>Square crimp shape</p>		<p><b>\$144.00</b></p> <p><b>CRIMPFOX CENTRUS 10H</b> <b>1213156</b></p> <p>Crimping tool for ferrules from 24-8 AWG.</p> <p>Hexagonal crimp shape</p>		<p><b>\$67.50</b></p> <p><b>WIREFOX-D 40</b> <b>1212161</b></p> <p>Stripping tool for conductors and cables.</p> <p>4.5-40 mm adjustable cutting depth</p>
	<p><b>\$36.50</b></p> <p><b>WIREFOX-D 11</b> <b>1212160</b></p> <p>Stripping tool for power and data lines.</p> <p>Diameter: 2.5-11 mm</p>		<p><b>\$70.00</b></p> <p><b>WIREFOX 2,5</b> <b>1212368</b></p> <p>Stripping tool, self-adjusting for conductors and cables.</p> <p>28-12 AWG</p>		<p><b>\$37.00 ea.</b></p> <p><b>AI SORTI BOX RD</b> <b>3202960</b></p> <p><b>AI-TWIN SORTI BOX BU</b> <b>3202986</b></p> <p>Assortment box, supplied with ferrules according to DIN 46228-4: 1990-09, 50 pcs.</p>

## HEAVYCON

### EVO Connector set

Heavyduty connector set consisting of sleeve housing, panel mounting base, push-in contact insert and cable gland.



#### Features and Benefits

- ✓ Easy handling & right connection for every application
- ✓ Push-in Contact for fast connection
- ✓ IP degree of protection (when plugged in): IP66



Scan the QR code to download the full HEAVYCON brochure

Order no.	Description	Product Description	Type/Size	Promo Price
1407710	HC-EVO-B06PT-BWSC-HL-M20-PLRBK	Connector set, Single locking latch , with cover	B6	\$47.00
1407711	HC-EVO-B10PT-BWD-HL-M25-PLRBK	Connector set, Double locking latch, w/o cover	B10	\$56.00
1407712	HC-EVO-B16PT-BWD-HH-M25-PLRBK	Connector set, Double locking latch, w/o cover	B16	\$70.00
1407713	HC-EVO-B24PT-BWD-HH-M32-PLRBK	Connector set, Double locking latch, w/o cover	B24	\$78.00
1408791	HC-EVO-B10PT-BWSC-HL-M25-PLRBK	Connector set, Single locking latch , with cover	B10	\$60.00
1408793	HC-EVO-B16PT-BWSC-HH-M25-PLRBK	Connector set, Single locking latch , with cover	B16	\$75.00
1408794	HC-EVO-B24PT-BWSC-HH-M32-PLRBK	Connector set, Single locking latch , with cover	B24	\$80.00

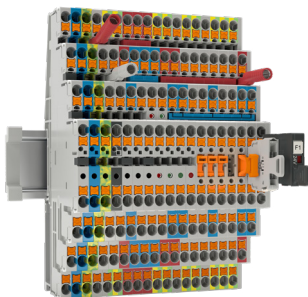
## Multi-level Push-in terminal blocks

### For space saving

Multi-level terminal blocks are terminal blocks that have multiple levels. Unlike double-level terminal blocks, they usually have three or four levels, but are similar in design to double-level terminal blocks. Each of the levels carries its own potential. Depending on the terminal block version, either just the top two levels or all levels can be connected easily with vertical bridging. In addition to the normal versions, those with integrated PV bridging are also available. In addition to the simple feed-through versions, portfolio also includes special motor terminals for the space-saving connection of three-phase motors. The bridging option for simple phase bridging on each level reduces the wiring time.

#### Features and Benefits

- ✓ Space-saving with a compact design, multi-conductor terminal blocks, and multi-level terminal blocks
- ✓ Time-saving conductor connection with tool-free direct-connection technology
- ✓ Compact design enables wiring in confined spaces
- ✓ High conductor pull-out forces with the spring construction



Order no.	Description	Product Description	Promo Price
3210499	PT 2,5-3L	Multi-level terminal block	\$5.00
3210509	PT 2,5-3L BU	Multi-level terminal block	\$5.00
3210542	PT 2,5-PE/3L	Motor terminal	\$10.50
3210541	PT 2,5-PE/L/L	Ground terminal	\$7.50
3210538	PT 2,5-PE/L/N	Ground terminal	\$7.50
1334599	PT 2,5-4L	Multi-level terminal block	\$9.50